

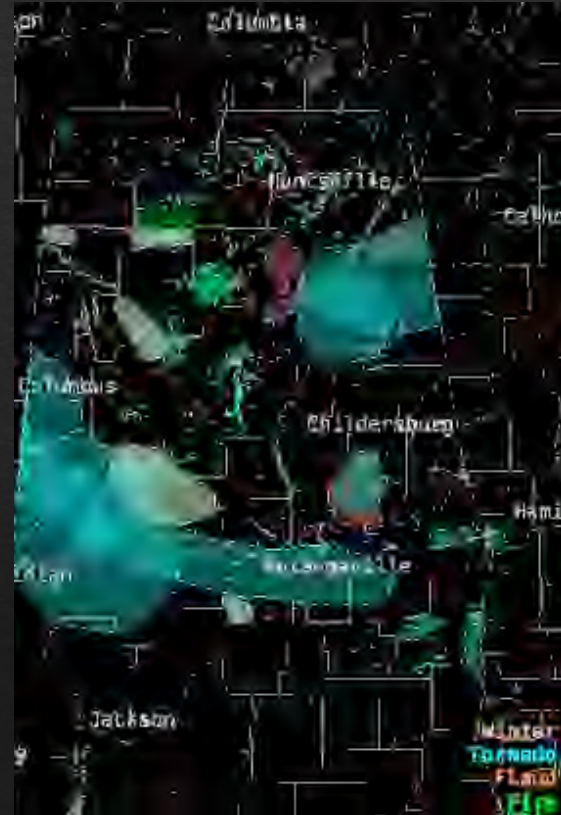
# Central Iowa EMS Directors

---

Brooke Hagenhoff, Meteorologist  
brooke.hagenhoff@noaa.gov  
515.270.4516  
NWS Des Moines

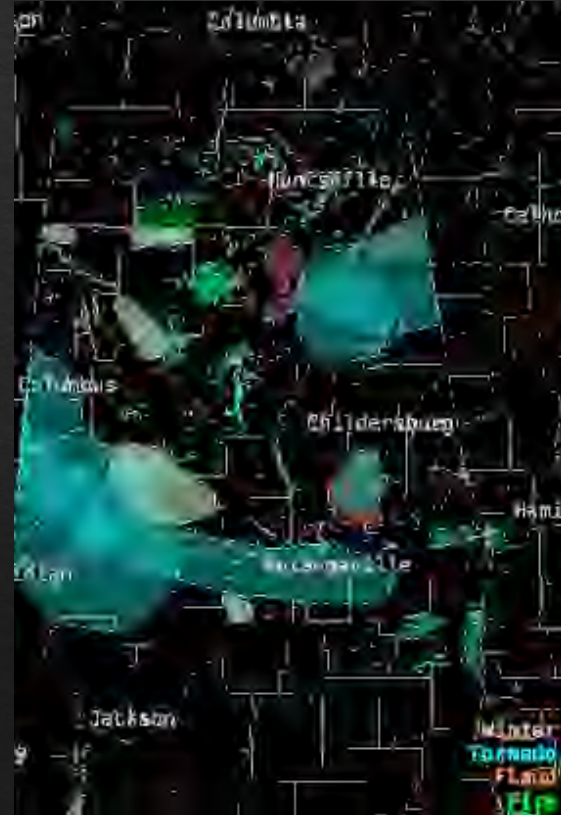
# BVOT - Brief Vulnerability Overview Tool

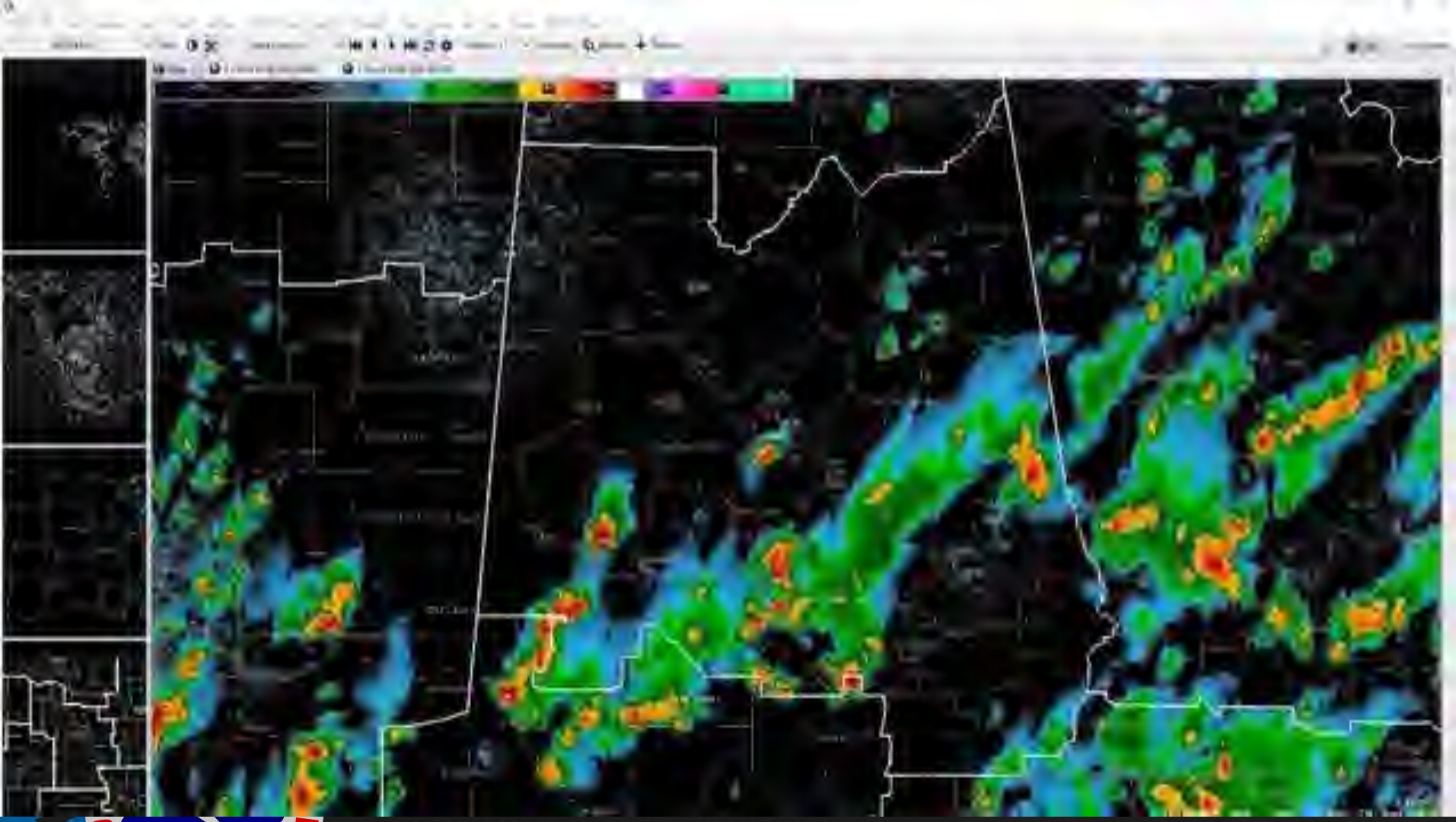
Identify vulnerable people, places,  
and things to provide extra visibility  
when issuing warnings



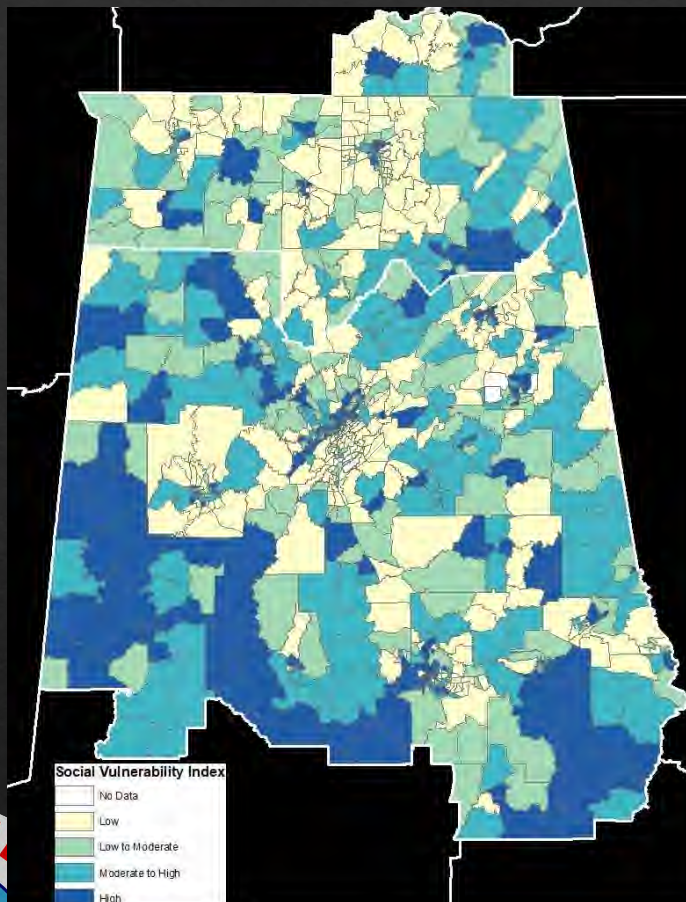
# BVOT - Brief Vulnerability Overview Tool

This information would be used to provide advanced notice to county Emergency Managers when significant impacts are expected.

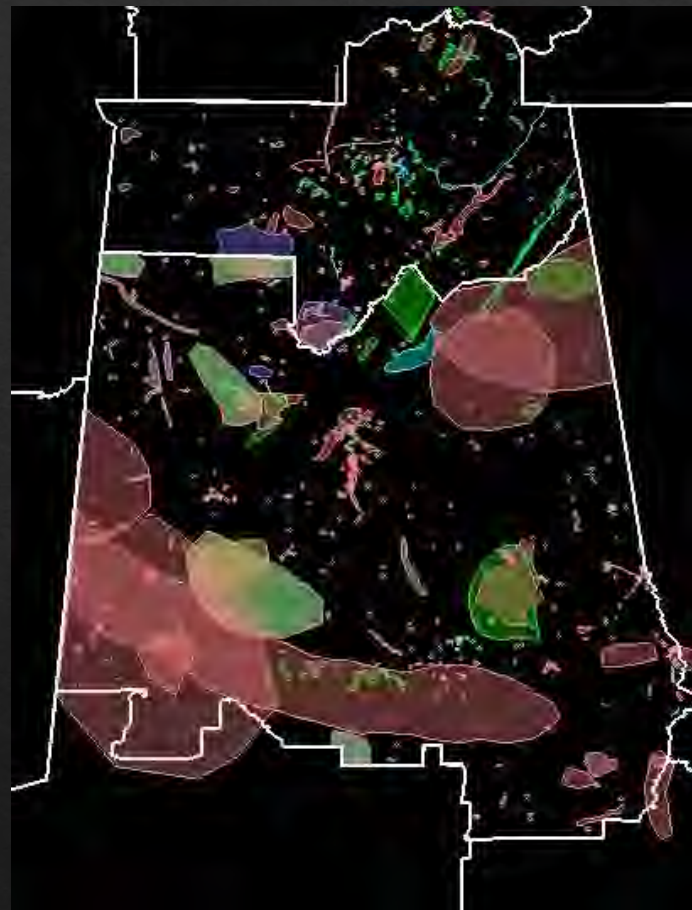




CDC Social Vulnerability Index (SVI)



BVOT



# Five Principles Guiding the BVOT

1. Must be operationally useful & easily integrated into current NWS operations
2. Must not detract from traditional NWS operations
3. Must not rely on NWS meteorologists having specialized social science expertise in order to use
4. Must not add significantly to the cognitive load of NWS meteorologists during normal operations
5. Must provide new, more robust, more fine-grained and/or more operationally useful data to EMs and other core partners as a result of its use in NWS operations



# Selecting Vulnerabilities

Worked with our core partners to identify...

1. Known everyday vulnerabilities
  - a. Not hypothesized or general (children or people with mobility challenges)
2. Spatially specific vulnerabilities
  - a. Not for vast areas or whole counties
3. Specific weather hazards & vulnerabilities
  - a. Severe, Flash Flood, Winter, Ice Jam



# How can we serve you?

What kind of information do you need when making weather plans?

When do you need this information?

How do you receive weather related information?

How do you receive warnings?

